



Background

Bloomberg Philanthropies launched the **Data for Health Initiative** to help governments build capacity and develop sustainable approaches in using scientific data to guide and support program decision making and policy development.

The initiative consists of three components:

1. The **Civil Registration and Vital Statistics** component, which aims to create high-quality birth and death registration systems,
2. The **Non-communicable Disease Surveillance** component, which aims to augment traditional health surveys with new, faster mobile phone surveys, and
3. The **Data Impact Program** component, which aims to ensure policy makers use data to make informed health-related decisions.

The third arm of the initiative, the Data Impact Program, is being implemented by the U.S. Centers for Disease Control and Prevention (CDC) and Vital Strategies, with each partner leading various components of the project.

Data Impact Program approach

The program collaborates with governments to expand their use of data to enhance public health. The partnership will

- Generate data-based insights,
- Create data-rich communications,
- Build data-oriented institutional competencies, and
- Catalyze data-driven public health actions.

CDC's role in developing and implementing the program

CDC is developing and helping countries implement the program by leveraging two CDC global public health capacity building programs: the Field Epidemiology Training Program (FETP) and the National Public Health Institute (NPHI) program.

FETPs are 2-year full-time training and service programs where health professionals (called residents) learn about and gain experience in applied epidemiology through supervised, on-the-job, competency-based training and service. FETPs are recognized worldwide as an effective means to strengthen capacity in surveillance, epidemiology, and outbreak response.

Since 1980, CDC has worked with Ministries of Health (MOHs) throughout the world to establish and support more than 50 FETPs with residents from 70 countries, resulting in more than 3,600 FETP graduates.

NPHIs are national science-based organizations that provide leadership and coordination for public health functions. NPHIs provide crucial expertise to protect the public's health through evidence-based decisions, policies, and programs to better prevent and control infectious diseases and reduce the burden of non-communicable diseases and injuries.

Launched in 2011, CDC's NPHI program has been working with 17 countries worldwide to develop new or strengthen existing NPHIs that are well-equipped to protect the public's health.

CDC's Data Impact Program components

The Data Impact Program consists of four components.

CDC and Vital Strategies jointly developed the Data to Policy Training program (*component 1*) for MOH staff, including FETP residents. Through this skills-based training, attendees learn how to use health data to inform policy and develop policy briefs.

CDC will establish a quarterly seminar series and a data use committee (*component 2*) where policy briefs and scientific studies on issues of public health concern can be presented to a wide range of leaders and policy makers.

CDC also developed and is conducting training-of-trainers (TOT) workshops in scientific communication (*component 3*). Following

the TOT, the trainers facilitate a scientific communication course for FETP residents and others. Afterwards, the trainers mentor course attendees over the course of a year to help them submit and publish articles in national and international scientific journals and, in selected countries, in newly created national public health bulletins (see below).

In addition, CDC will help NPHIs develop and/or strengthen a national public health bulletin (*component 4*) that will provide reliable and timely epidemiologic data for distribution among relevant stakeholders throughout the country.

For more information

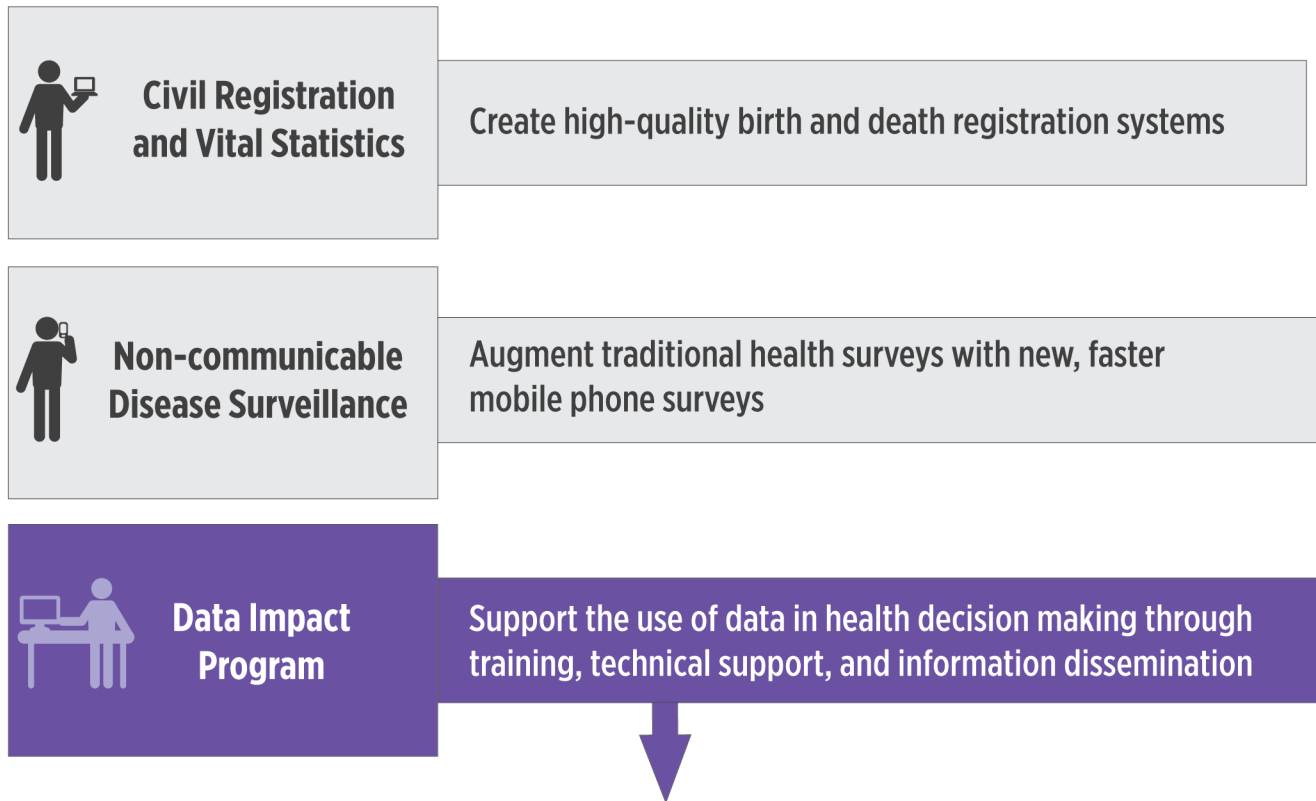
Contact Nausheen Ahmed at NAhmed2@cdc.gov.

“Accurate and timely data are critical for public health planning and emergency response; by using data effectively we can save millions of lives.”

Dr. Tom Frieden, CDC Director



Overview of Bloomberg Philanthropies' Data for Health Initiative



Overview of CDC's components of the Data Impact Program

